

Kodak Color Control Patches

Blue Cyan Green Yellow Red Magenta White 3/Color Black

A 1 2 3 4 5 6 M 8 9 10 11 12 13 14 15 B 17 18 19

[從七位新井春次郎述]解剖学 卷之三



從七位新井春次郎述

解剖学

卷之三



解到財物...

...

一規款...

...

...

...

...

...

...

...

...

B 規款...

...

...

...

...

...

...

...

...

...

...



用

猪

西

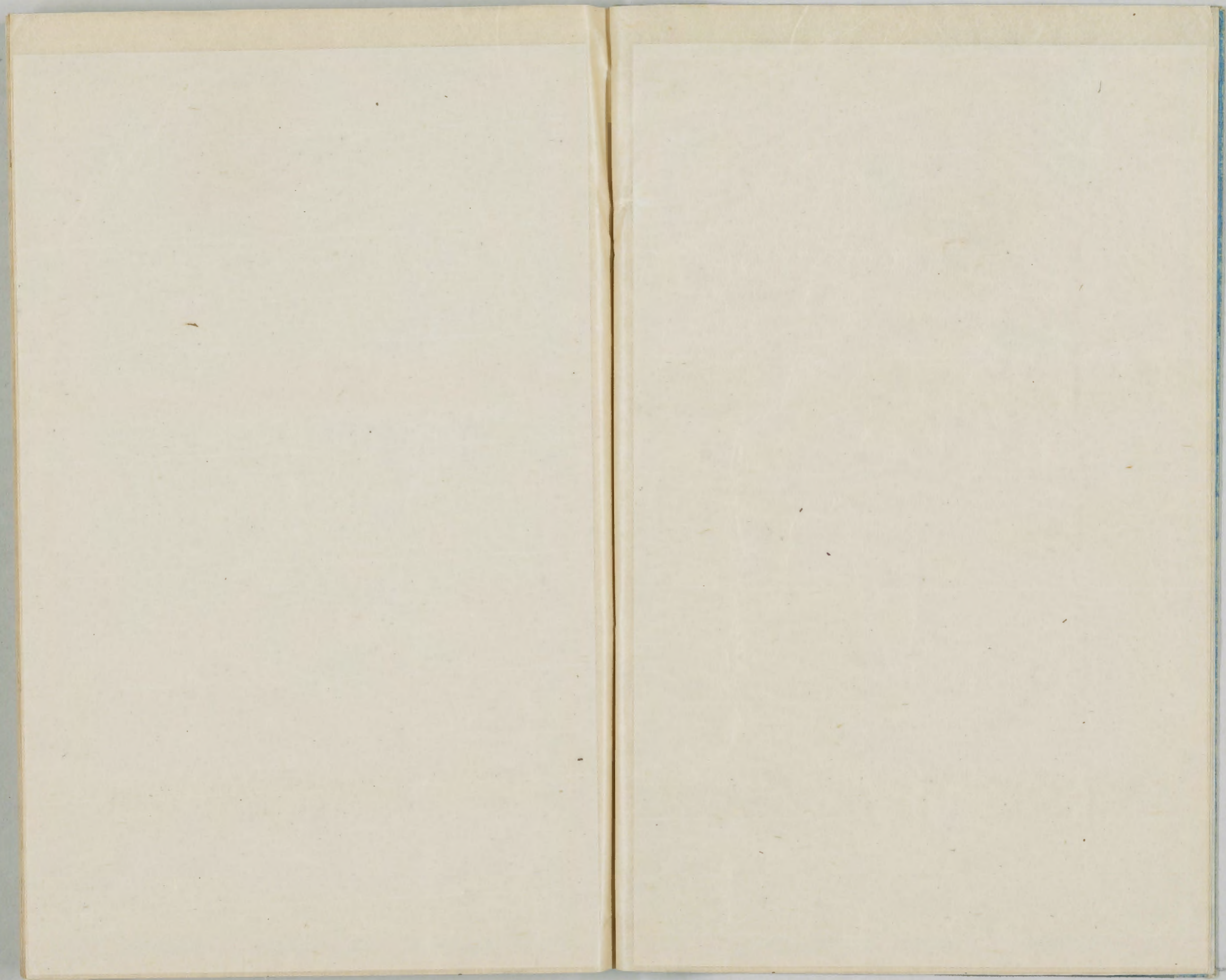
才

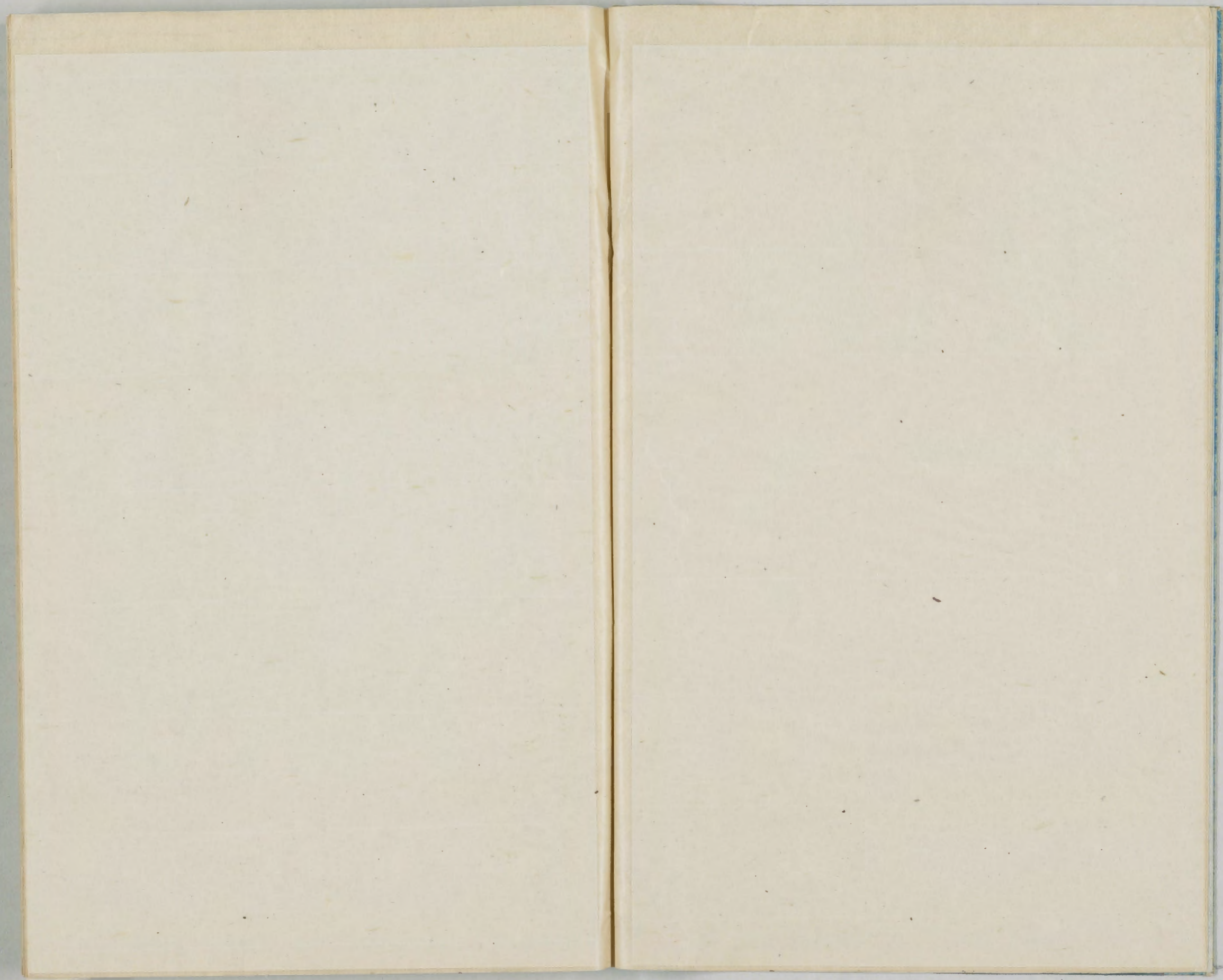
胸

岸

下

用





筋 學 *Myologia (Muskellehre)*



總論

筋 *Musculi (Muskeln)* 二 身體運動機ニシテニ種アリ且ニ意識隨テ
運動ニシテナリ之ヲ隨意筋 *Willkürliche Muskeln* トモトモニ意識
隨テ入レテナリ之ヲ不隨意筋 *Inwillkürliche Muskeln* トモトモニ種ニ筋
ニ獨リ運動思ハレテニ是ニ是構造ト思ハレテ筋ハ筋纖維ニ集合シ成
之ニテハ構造ニシテ筋纖維ニ其ノ構造ニテハ筋纖維ニ其ノ構造ニテハ筋
ヲ構造ニテハ筋纖維ニ其ノ構造ニテハ筋纖維ニ其ノ構造ニテハ筋
Muscularnes (Quergestreifte Muskelfasern) トモトモニ種ニ筋
ノヤトモトモニ種 *Quergerichte Muskeln* トモトモニ種 *Quergerichte*
筋ハ不隨意筋ニ其ノ構造ニテハ筋纖維ニ其ノ構造ニテハ筋纖維
纖維 *Flatte Muskelfasern* トモトモニ種 *Flatte*

ラ知リ独キ停止部、向ク附屬セルニテハ如斯クモ、相集合スルニシテ
 放射状ニ筋 Musculus radiatusトシテ(頸動脈前)又背ニ面ニシテ筋
 頭リシテ、却テ合テ一ノ筋頭トシテ一箇ノ腺中ニ附着セルニテ、如斯ク筋ノ其ノ
 頭ノ筋ニ隨テ

ニ頭筋 Musculus bicipitis

三頭筋 Musculus tricipitis

四頭筋 Musculus quadriceps 下ノ(肩ニ頭筋ニ頭筋トシテ)

子筋ニ背頭ニシテ、却テ、筋尾ノ筋カニ、筋ノ如ク、

二尾筋 Musculus bicaudatus

一尾筋 Musculus tricaudatus

一方ニ筋頭トシテ、筋尾ノ筋カニ、筋ノ如ク、

新列筋 Musculus multispiculus 下ノ

又廣筋 Musculus latissimus 廣筋トシテ、筋ノ如ク、

頸筋 Musculus Cervicis 下ノ筋トシテ、

部ニ筋ニ頭筋トシテ、筋尾ノ筋カニ、筋ノ如ク、

中間筋 Tensor intermedialis 筋トシテ、

筋ノ筋トシテ、筋尾ノ筋カニ、筋ノ如ク、

二頭筋 Musculus digastricus

多頭筋 Musculus polygastrius 筋トシテ、

筋中ノ筋トシテ、筋尾ノ筋カニ、筋ノ如ク、

特ニ、腺中 Musculus glandularis 腺中ニ筋トシテ、

如ク、其筋頭 Musculus glandularis 筋トシテ、

筋トシテ、筋尾ノ筋カニ、筋ノ如ク、

筋トシテ、筋尾ノ筋カニ、筋ノ如ク、

筋トシテ、筋尾ノ筋カニ、筋ノ如ク、

筋トシテ、筋尾ノ筋カニ、筋ノ如ク、

筋トシテ、筋尾ノ筋カニ、筋ノ如ク、

筋トシテ、筋尾ノ筋カニ、筋ノ如ク、

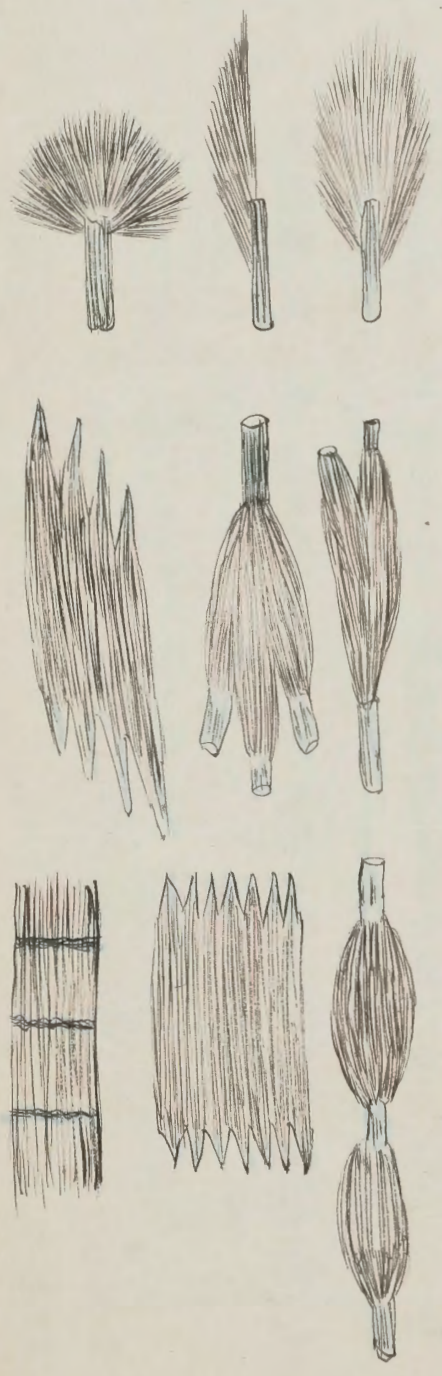
筋トシテ、筋尾ノ筋カニ、筋ノ如ク、

筋トシテ、筋尾ノ筋カニ、筋ノ如ク、

筋トシテ、筋尾ノ筋カニ、筋ノ如ク、

筋トシテ、筋尾ノ筋カニ、筋ノ如ク、

lingulobuccige muskeln
 Melngelenke



筋、神経筋 Hilfsorgan der Muskeln

I) 筋 Tendines

Nach der Richtung der Fasern unterscheidet man: Sehnen (unipennig) und Bänder (bipennig)

II) 筋の構造

筋の構造は、筋線維 (Myofibrillen) 及び 筋線維の結合組織 (Sarcolemma) による。筋線維は、横紋 (Sarcomere) を示す。筋線維の直径は、約 10-100 μm である。

筋線維の構造は、Z線 (Z-line) によって区切られる。Z線は、筋線維の両端にあり、筋線維の中心部を結ぶ。筋線維の中心部には、M線 (M-line) がある。

筋線維の構造は、筋線維の両端にあり、筋線維の中心部を結ぶ。筋線維の中心部には、M線 (M-line) がある。筋線維の直径は、約 10-100 μm である。

筋線維の構造は、筋線維の両端にあり、筋線維の中心部を結ぶ。筋線維の中心部には、M線 (M-line) がある。筋線維の直径は、約 10-100 μm である。

III) 筋の発生

筋の発生は、中胚葉 (Mesoderm) から起こる。筋線維は、筋芽 (Myoblast) から発生する。筋芽は、筋線維の両端にあり、筋線維の中心部を結ぶ。

IV) 筋の分類

筋の分類は、筋線維の直径 (Myofibril diameter) による。筋線維の直径は、約 10-100 μm である。

筋の分類は、筋線維の直径 (Myofibril diameter) による。筋線維の直径は、約 10-100 μm である。

筋の分類は、筋線維の直径 (Myofibril diameter) による。筋線維の直径は、約 10-100 μm である。

筋の分類は、筋線維の直径 (Myofibril diameter) による。筋線維の直径は、約 10-100 μm である。

神の通路

④ 脚部 Yinsula Tenokemum

この脚一趾筋より足首の筋まで、故に脚一趾筋の間を走る。この筋の起る所、直線に直線あり

⑤ 脚部 Yinsula Tenokemum (Ban Anoklen)

この筋の起る所、足首の筋の中、直線に直線あり、その筋の起る所、直線に直線あり、その筋の起る所、直線に直線あり、その筋の起る所、直線に直線あり

⑥ 脚部 Yinsula Tenokemum (Knochen rollen)

この筋の起る所、足首の筋の中、直線に直線あり、その筋の起る所、直線に直線あり、その筋の起る所、直線に直線あり、その筋の起る所、直線に直線あり

⑦ 脚部 Yinsula Tenokemum

この筋の起る所、足首の筋の中、直線に直線あり、その筋の起る所、直線に直線あり、その筋の起る所、直線に直線あり、その筋の起る所、直線に直線あり

⑧ 脚部 Schuen Knochen (asse des amovischen)

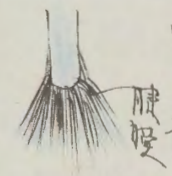
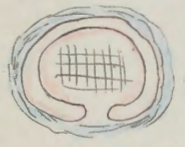
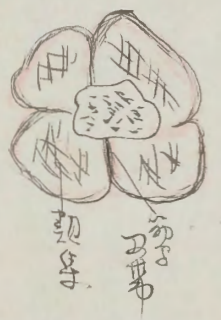
この筋の起る所、足首の筋の中、直線に直線あり、その筋の起る所、直線に直線あり、その筋の起る所、直線に直線あり、その筋の起る所、直線に直線あり

⑨ 脚部 Chyans Tenokemum

この筋の起る所、足首の筋の中、直線に直線あり、その筋の起る所、直線に直線あり、その筋の起る所、直線に直線あり、その筋の起る所、直線に直線あり

⑩ 筋部

この筋の起る所、足首の筋の中、直線に直線あり、その筋の起る所、直線に直線あり、その筋の起る所、直線に直線あり、その筋の起る所、直線に直線あり

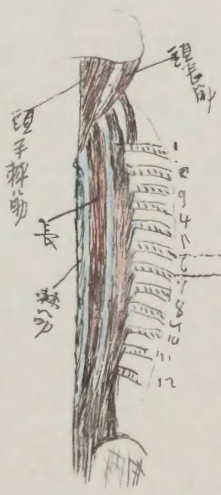


深層

M. pectoralis major

1) *M. pectoralis minor* (胸小筋)
(胸小筋)

この筋は、肋骨の一部と、鎖骨の一部とを結びつけ、腕を動かすのに役立つ。



A *M. pectoralis major*

深層

この筋は、肋骨の一部と、鎖骨の一部とを結びつけ、腕を動かすのに役立つ。この筋は、腕を動かすのに役立つ。この筋は、腕を動かすのに役立つ。

B *M. pectoralis minor*

この筋は、肋骨の一部と、鎖骨の一部とを結びつけ、腕を動かすのに役立つ。

(胸小筋) *M. pectoralis minor*

深層

この筋は、肋骨の一部と、鎖骨の一部とを結びつけ、腕を動かすのに役立つ。この筋は、腕を動かすのに役立つ。この筋は、腕を動かすのに役立つ。

C *M. serratus anterior*

この筋は、肋骨の一部と、鎖骨の一部とを結びつけ、腕を動かすのに役立つ。この筋は、腕を動かすのに役立つ。この筋は、腕を動かすのに役立つ。

D *M. serratus anterior*

この筋は、肋骨の一部と、鎖骨の一部とを結びつけ、腕を動かすのに役立つ。この筋は、腕を動かすのに役立つ。この筋は、腕を動かすのに役立つ。

背筋膜 Fascia over Back-muscles

1 浅筋膜

この筋膜は背筋膜の層の表面に覆われて

2 深筋膜

この筋膜は背筋膜の層の表面に覆われて、その下に背筋膜の層がある。背筋膜の層は、背筋膜の層の表面に覆われて、その下に背筋膜の層がある。

腰筋又腰 Ligamentum lumbi - Costalis

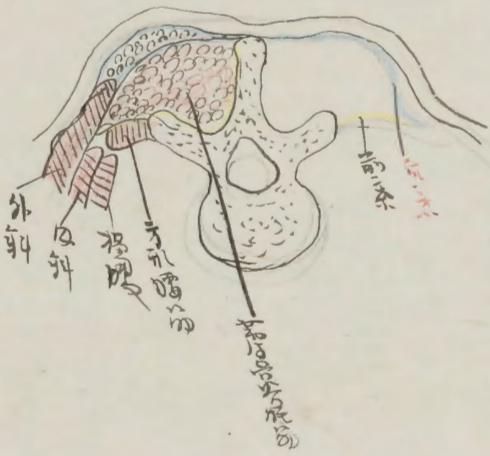
腰筋膜 *musculus lumbi - Costalis*

この筋膜は腰筋膜の層の表面に覆われて、その下に腰筋膜の層がある。腰筋膜の層は、腰筋膜の層の表面に覆われて、その下に腰筋膜の層がある。腰筋膜の層は、腰筋膜の層の表面に覆われて、その下に腰筋膜の層がある。

この筋膜は腰筋膜の層の表面に覆われて、その下に腰筋膜の層がある。腰筋膜の層は、腰筋膜の層の表面に覆われて、その下に腰筋膜の層がある。

腰筋膜の層

Musculus Sacrum - Coccygis



1 (背筋膜)

腰筋膜の層

この筋膜は腰筋膜の層の表面に覆われて、その下に腰筋膜の層がある。腰筋膜の層は、腰筋膜の層の表面に覆われて、その下に腰筋膜の層がある。

2 (前及後)

肩胛骨 (Scapula)

肩胛骨の位置は、胸骨の下にあり、肋骨の間に位置する。肩胛骨の形状は、三角形であり、その頂点は上方に向いている。

B 肩胛骨の筋

肩胛骨の筋類:

1 肩胛骨筋 (Deltoides musculus)

2 肩胛骨筋 (Deltoides musculus)

2 肩胛骨筋 (Deltoides musculus)

4 肩胛骨筋 (Deltoides musculus)

4 肩胛骨筋 (Deltoides musculus)

1 肩胛骨筋 (Deltoides musculus)

1 肩胛骨筋 (Deltoides musculus)

肩胛骨の筋類は、肩胛骨の周囲に分布し、肩関節の運動を補助する。肩胛骨筋は、肩胛骨の頂点から始まり、肩関節の周囲に分布する。

肩胛骨の筋類は、肩胛骨の周囲に分布し、肩関節の運動を補助する。肩胛骨筋は、肩胛骨の頂点から始まり、肩関節の周囲に分布する。肩胛骨筋は、肩胛骨の頂点から始まり、肩関節の周囲に分布する。

肩胛骨筋 (Deltoides musculus)

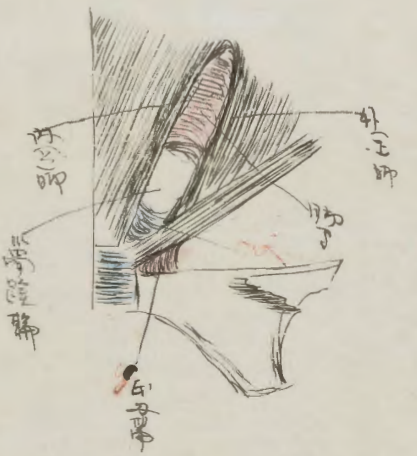
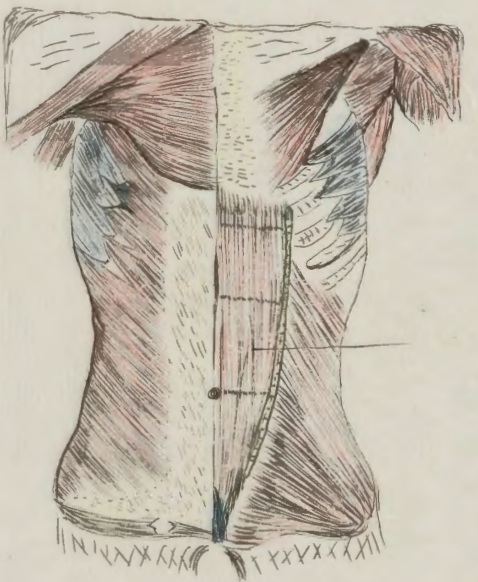
肩胛骨筋 (Deltoides musculus)

肩胛骨筋 (Deltoides musculus)

肩胛骨筋 (Deltoides musculus)

肩胛骨筋 (Deltoides musculus)

此部之筋，其起點在腰間，其終點在肋骨。其功用，在於呼吸。其起點在腰間，其終點在肋骨。其功用，在於呼吸。



此部之筋，其起點在腰間，其終點在肋骨。

Pyramidalis abdominis

此部之筋，其起點在腰間，其終點在肋骨。其功用，在於呼吸。

此部之筋，其起點在腰間，其終點在肋骨。其功用，在於呼吸。

Obliquus

Obliquus abdominis externus

Obliquus descendens

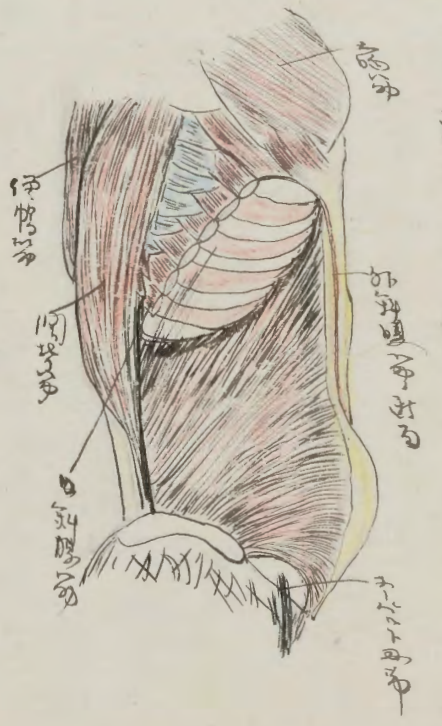
此部之筋，其起點在腰間，其終點在肋骨。其功用，在於呼吸。

此部之筋，其起點在腰間，其終點在肋骨。

此部之筋，其起點在腰間，其終點在肋骨。

Handwritten notes at the top of page 17, including the word "Musculus" and other illegible text.

Main body of handwritten text on page 17, describing anatomical details in a cursive script.



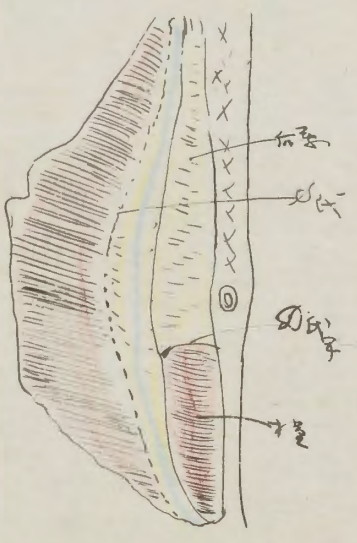
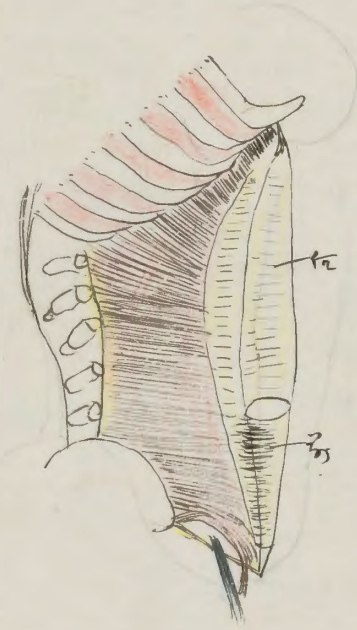
Textual annotations on page 16, positioned to the right of the anatomical drawing, providing further details.

Handwritten notes at the top of page 16, including the word "Musculus" and other illegible text.

Main body of handwritten text on page 16, continuing the anatomical description.

二 腹筋 *m. Obliquus abdominis internus*
 上行腹筋 *m. obliquus ascendens*

此筋は腹筋の下部にあり、肋骨の下部に附着し、下腹部に下行し、骨盤の中に入り、骨盤の筋に合流する。



外上部に肋骨に附着し、下部に骨盤に入り、骨盤の筋に合流する。この筋は肋骨の下部にあり、肋骨の下部に附着し、下腹部に下行し、骨盤の中に入り、骨盤の筋に合流する。腹筋の下部にあり、肋骨の下部に附着し、下腹部に下行し、骨盤の中に入り、骨盤の筋に合流する。

此筋は腹筋の下部にあり、肋骨の下部に附着し、下腹部に下行し、骨盤の中に入り、骨盤の筋に合流する。この筋は肋骨の下部にあり、肋骨の下部に附着し、下腹部に下行し、骨盤の中に入り、骨盤の筋に合流する。腹筋の下部にあり、肋骨の下部に附着し、下腹部に下行し、骨盤の中に入り、骨盤の筋に合流する。

二 腹筋 *m. Obliquus abdominis internus*
 上行腹筋 *m. obliquus ascendens*

此筋は腹筋の下部にあり、肋骨の下部に附着し、下腹部に下行し、骨盤の中に入り、骨盤の筋に合流する。この筋は肋骨の下部にあり、肋骨の下部に附着し、下腹部に下行し、骨盤の中に入り、骨盤の筋に合流する。腹筋の下部にあり、肋骨の下部に附着し、下腹部に下行し、骨盤の中に入り、骨盤の筋に合流する。

Handwritten text in a cursive script, likely a list or notes. The text is written vertically on the page.

Chamaecyparis nivalis

Handwritten text in a cursive script, likely a list or notes. The text is written vertically on the page.

Picea semil

Handwritten text in a cursive script, likely a list or notes. The text is written vertically on the page.

Chamaecyparis nivalis

Handwritten text in a cursive script, likely a list or notes. The text is written vertically on the page.

Handwritten text in a cursive script, likely a list or notes. The text is written vertically on the page.

Handwritten text in a cursive script, likely a list or notes. The text is written vertically on the page.

Fraxia transdermanis

Handwritten text in a cursive script, likely a list or notes. The text is written vertically on the page.

Handwritten text in a cursive script, likely a list or notes. The text is written vertically on the page.

Handwritten text in a cursive script, likely a list or notes. The text is written vertically on the page.

Handwritten text in a cursive script, likely a list or notes. The text is written vertically on the page.

Handwritten text in a cursive script, likely a list or notes. The text is written vertically on the page.

Handwritten text in a cursive script, likely a list or notes. The text is written vertically on the page.

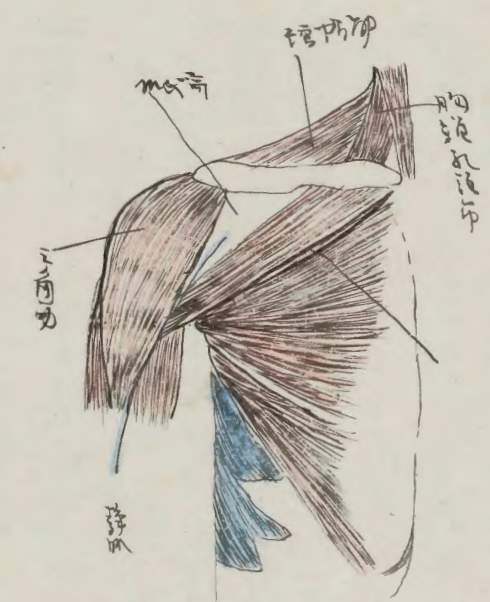
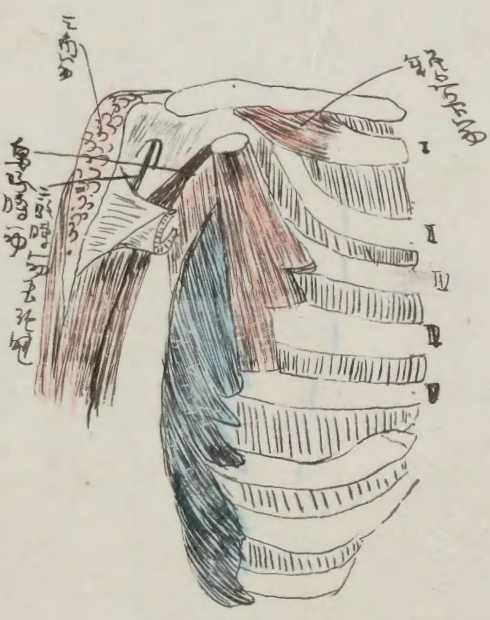
Handwritten text in a cursive script, likely a list or notes. The text is written vertically on the page.

1. 胸大筋 (M. pectoralis major) の起點は鎖骨の第2、3、4肋にあり、腋窩の筋帯に付着する。

2. 胸小筋 (M. pectoralis minor) の起點は鎖骨の第3、4、5肋にあり、肩胛骨の喙頭に付着する。

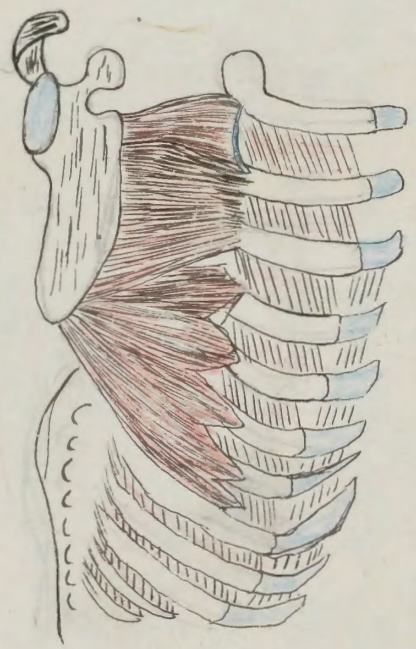
3. 腹直筋 (M. rectus abdominis) は、肋骨の第5、6、7、8、9、10にあり、臍に付着する。

4. 腹斜筋 (M. external oblique) は、肋骨の第10、11、12にあり、恥骨に付着する。



5. 背筋 (M. trapezius) は、頸椎の第1、2、3、4、5、6、7、8、9、10、11、12にあり、肩胛骨の肩峰に付着する。

Handwritten text at the top of the page, likely a title or page number.



m. superficialis

Handwritten notes in Japanese characters describing the superficial muscle, its location, and function.

m. serratus anterior

Handwritten notes in Japanese characters describing the serratus anterior muscle, its origin, and insertion.

中部 (Middle section)

Handwritten notes in Japanese characters describing the middle section of the muscle.

下部 (Lower section)

Handwritten notes in Japanese characters describing the lower section of the muscle.

Handwritten notes in Japanese characters, possibly describing the use of the muscle.

Handwritten notes in Japanese characters at the bottom of the page, likely a conclusion or summary.

Small handwritten notes in the top left corner of the page.

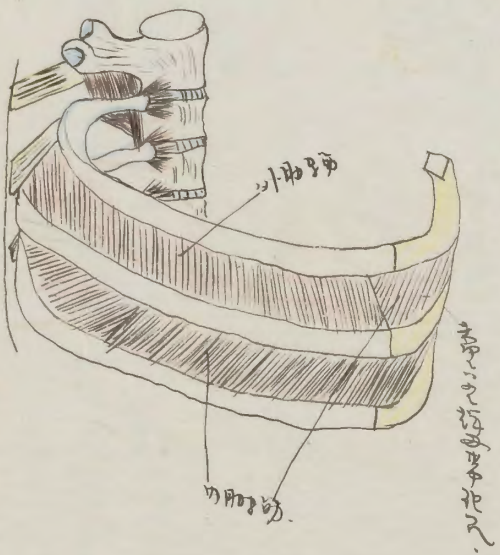
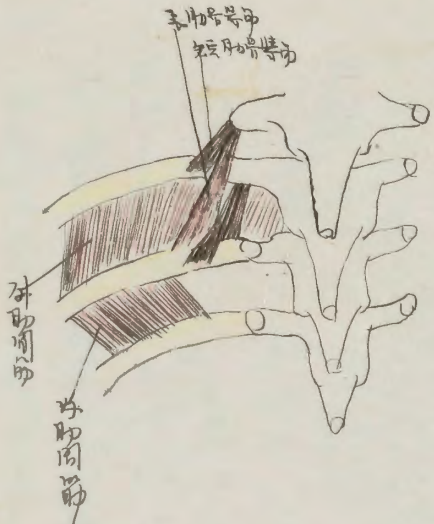
解剖

(肋骨部の解剖)

① 肋骨筋

M. Levatores Costarum

この筋は肋骨の基部から肋骨の頭部まで伸びる。



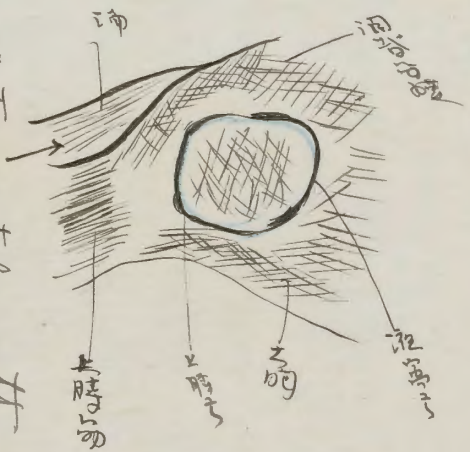
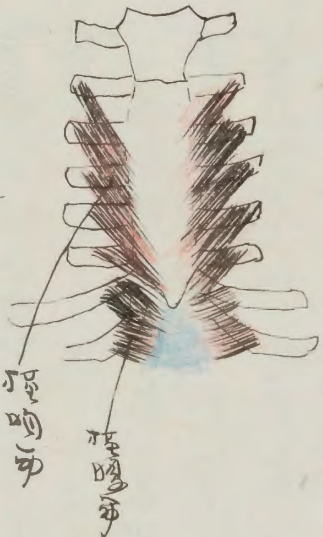
肋骨の頭部は肋骨の基部より肋骨の頭部まで伸びる。この筋は肋骨の基部から肋骨の頭部まで伸びる。この筋は肋骨の基部から肋骨の頭部まで伸びる。この筋は肋骨の基部から肋骨の頭部まで伸びる。

解剖

肋骨筋 *M. Levatores Costarum* (Anatomical drawing)

② 肋骨筋 *M. Intercostales*

この筋は肋骨の基部から肋骨の頭部まで伸びる。



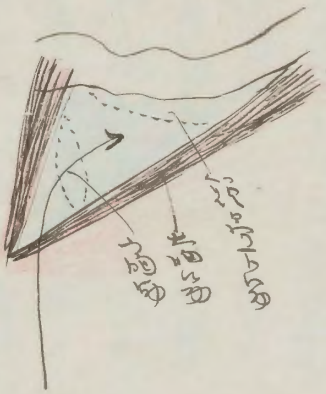
① 肋骨筋 *M. Intercostales*

この筋は肋骨の基部から肋骨の頭部まで伸びる。この筋は肋骨の基部から肋骨の頭部まで伸びる。この筋は肋骨の基部から肋骨の頭部まで伸びる。この筋は肋骨の基部から肋骨の頭部まで伸びる。この筋は肋骨の基部から肋骨の頭部まで伸びる。

呼吸の筋

呼吸筋 Fascia endothoracica
Parietopleura & Viscer

呼吸筋の筋は、胸壁の内面及び肺の外面にあり、その筋は、
胸壁の内面及び肺の外面にあり、その筋は、
胸壁の内面及び肺の外面にあり、その筋は、
胸壁の内面及び肺の外面にあり、その筋は、



横隔膜 Diaphragma (Zwischenfell)

横隔膜は、胸腔と腹腔とを隔てる膜である。其の中心は、
第二肋骨の間にあり、その中心は、
第二肋骨の間にあり、その中心は、
第二肋骨の間にあり、その中心は、

呼吸筋

呼吸筋は、胸腔下部にあり、その中心は、
第二肋骨の間にあり、その中心は、
第二肋骨の間にあり、その中心は、

下部にあり、その中心は、
第二肋骨の間にあり、その中心は、

呼吸筋 Partio Ventralis 呼吸筋

呼吸筋 Partio Sternalis

呼吸筋 Partio Costalis

呼吸筋 Partio Ventralis

呼吸筋 Partio Medialis 呼吸筋 Partio Sternalis

呼吸筋

呼吸筋は、胸腔下部にあり、その中心は、
第二肋骨の間にあり、その中心は、
第二肋骨の間にあり、その中心は、

呼吸筋は、胸腔下部にあり、その中心は、
第二肋骨の間にあり、その中心は、
第二肋骨の間にあり、その中心は、

呼吸筋は、胸腔下部にあり、その中心は、
第二肋骨の間にあり、その中心は、
第二肋骨の間にあり、その中心は、

呼吸筋は、胸腔下部にあり、その中心は、
第二肋骨の間にあり、その中心は、
第二肋骨の間にあり、その中心は、

呼吸筋は、胸腔下部にあり、その中心は、
第二肋骨の間にあり、その中心は、
第二肋骨の間にあり、その中心は、

呼吸筋は、胸腔下部にあり、その中心は、
第二肋骨の間にあり、その中心は、
第二肋骨の間にあり、その中心は、

呼吸筋は、胸腔下部にあり、その中心は、
第二肋骨の間にあり、その中心は、
第二肋骨の間にあり、その中心は、

呼吸筋は、胸腔下部にあり、その中心は、
第二肋骨の間にあり、その中心は、
第二肋骨の間にあり、その中心は、

Diagnosis in diatomaceous medicine

Diagnosis in diatomaceous medicine

Diagnosis in diatomaceous medicine

Diagnosis in diatomaceous medicine

Diagnosis in diatomaceous medicine

Diagnosis in diatomaceous medicine

Diagnosis in diatomaceous medicine

Diagnosis in diatomaceous medicine

Diagnosis in diatomaceous medicine

Diagnosis in diatomaceous medicine

Diagnosis in diatomaceous medicine

Diagnosis in diatomaceous medicine

Diagnosis in diatomaceous medicine

Diagnosis in diatomaceous medicine

Diagnosis in diatomaceous medicine

Diagnosis in diatomaceous medicine

Diagnosis in diatomaceous medicine

Diagnosis in diatomaceous medicine

Diagnosis in diatomaceous medicine

Diagnosis in diatomaceous medicine

Diagnosis in diatomaceous medicine

Diagnosis in diatomaceous medicine

Diagnosis in diatomaceous medicine

Diagnosis in diatomaceous medicine

Diagnosis in diatomaceous medicine

Diagnosis in diatomaceous medicine

Diagnosis in diatomaceous medicine

Diagnosis in diatomaceous medicine

Diagnosis in diatomaceous medicine

Diagnosis in diatomaceous medicine

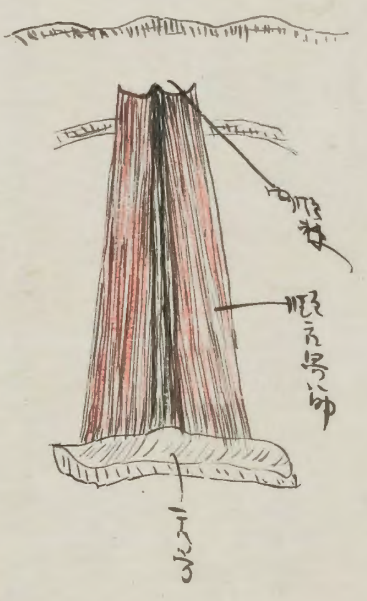
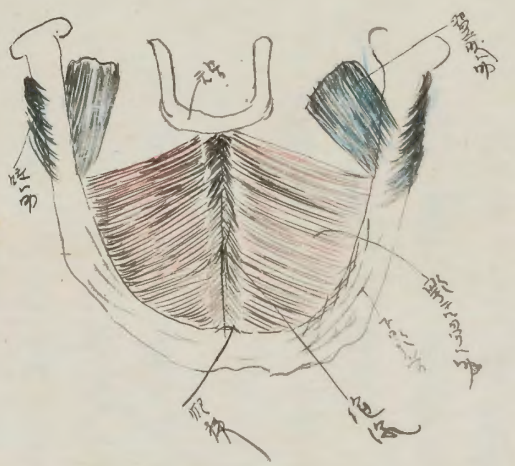
Diagnosis in diatomaceous medicine

Diagnosis in diatomaceous medicine

Handwritten text in Arabic script, likely describing anatomical details or procedures related to the jaw muscles.

M. bivergens mandibulae

Handwritten text in Arabic script, possibly a title or introductory note for the anatomical section.



Handwritten text in Arabic script, providing further anatomical or descriptive information.

M. bivergens

Handwritten text in Arabic script, likely describing the *M. bivergens* muscle and its anatomical features.

Musculi Capitis (Kopfmuskeln)

Handwritten text in Arabic script, detailing the muscles of the head and their functions.

M. rectus capitis anterior

Handwritten text in Arabic script, describing the *M. rectus capitis anterior* muscle.

M. rectus capitis lateralis

Handwritten text in Arabic script, describing the *M. rectus capitis lateralis* muscle.

Handwritten text in Arabic script, likely a title or introductory note.

Fraxinus pennsylvanica

Fraxinus pennsylvanica

Main body of handwritten text in Arabic script, describing the plant.

Fraxinus pennsylvanica

Fraxinus pennsylvanica

Second main body of handwritten text in Arabic script.

Handwritten text in Arabic script, likely a title or introductory note.

Fraxinus pennsylvanica

Fraxinus pennsylvanica

Handwritten text in Arabic script, likely a title or introductory note.

Fraxinus pennsylvanica

Handwritten text in Arabic script, likely a title or introductory note.

Handwritten text in Arabic script, likely a title or introductory note.

Handwritten text in Arabic script, likely a title or introductory note.

Handwritten text in Arabic script, likely a title or introductory note.

Handwritten text in Arabic script, likely a title or introductory note.

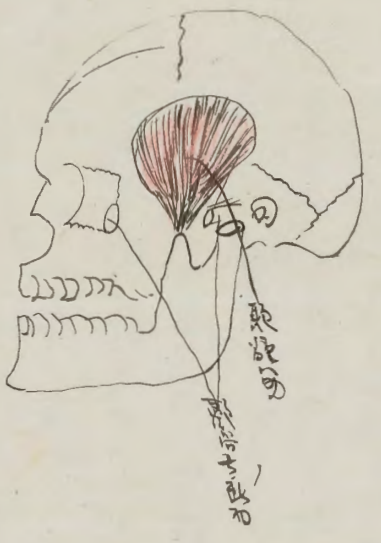
Fraxinus pennsylvanica

Handwritten text in Arabic script, likely a title or introductory note.

Handwritten text in Arabic script, likely a title or introductory note.

Handwritten text in Arabic script, likely a title or introductory note.

Handwritten text in Arabic script, likely a title or introductory note.



此為咀嚼肌之總稱，其功用在於咀嚼食物。
 此肌之纖維，係由三叉神經之第三支所支配。
 其神經纖維，係由三叉神經節之神經根所發出。

咀嚼肌 (Kaumuskel)
m. masseter mandibularis
m. Temporalis

咀嚼肌之功用，在於咀嚼食物。其神經纖維，係由三叉神經節之神經根所發出。

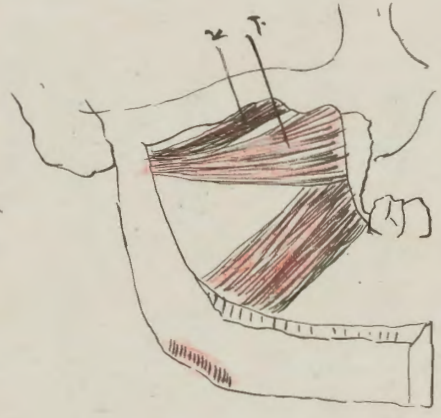
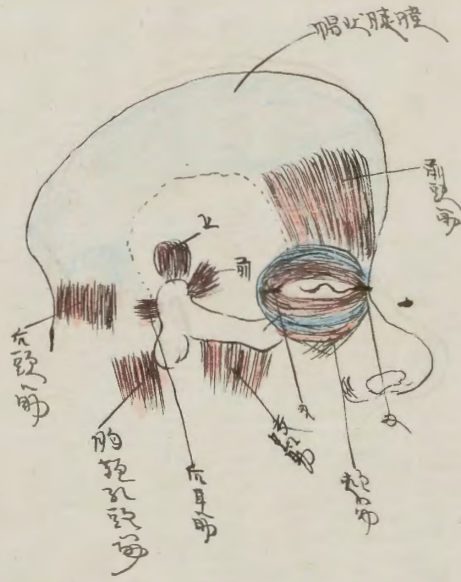
此為咀嚼肌之總稱，其功用在於咀嚼食物。此肌之纖維，係由三叉神經之第三支所支配。其神經纖維，係由三叉神經節之神經根所發出。

咀嚼肌 (Kaumuskel)
m. masseter mandibularis
m. Temporalis

咀嚼肌之功用，在於咀嚼食物。其神經纖維，係由三叉神經節之神經根所發出。

Handwritten text at the top of the page, likely a title or introductory note.

咀嚼の作用



Handwritten notes in Chinese characters above the diagram on the right.

Main body of handwritten text in Chinese characters, describing anatomical or physiological details.

Handwritten text at the top of the page, likely a title or introductory note.

m. pterygoideus minor

m. pterygoideus externus

Handwritten text in Chinese characters, likely describing the m. pterygoideus externus.

m. pterygoideus major

m. pterygoideus internus

Main body of handwritten text in Chinese characters, describing the m. pterygoideus internus and m. masseter.

m. masseter

Handwritten notes in Arabic script at the top of the page.

Galva sphenocantica Cronin

Handwritten text in Arabic script, likely describing the anatomical structure.

Musculi auriculares

Handwritten text in Arabic script, possibly describing the auricular muscles.

Handwritten text in Arabic script, continuing the anatomical description.

Handwritten text in Arabic script, continuing the anatomical description.

m. auricularis posterior

Handwritten text in Arabic script, describing the posterior auricular muscle.

Handwritten text in Arabic script, possibly a note or reference.

Handwritten notes in Arabic script at the top of the page.

Handwritten text in Arabic script.

Handwritten text in Arabic script.

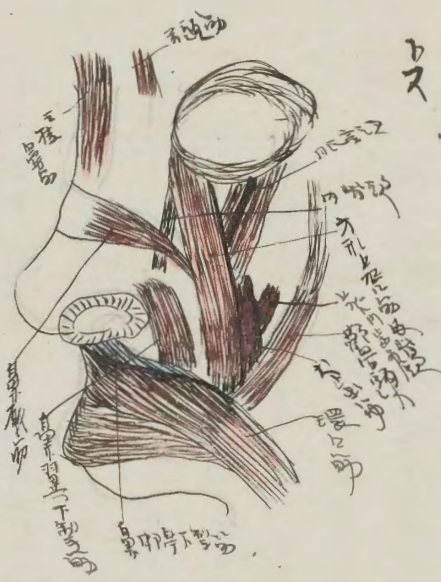
Handwritten text in Arabic script.

Musculi der Augenlider

Handwritten text in Arabic script, describing the muscles of the eyelids.

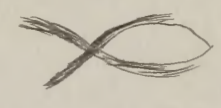
Handwritten text in Arabic script, continuing the anatomical description.

Handwritten text in Arabic script.



Mus. palpebralis

Handwritten text in Arabic script, likely a note or reference related to the palpebral muscle.



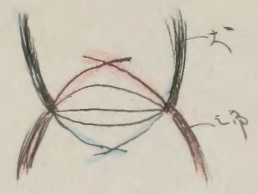
Handwritten text in the left column, starting with a large initial letter.

Handwritten text in the left column, continuing the previous section.

Handwritten text in the left column, continuing the previous section.

Handwritten title for the section: m. lusciniator

Handwritten text in the right column, starting with a large initial letter.



Handwritten title for the section: m. quadratus menti

Handwritten text in the right column, starting with a large initial letter.

Handwritten title for the section: m. Carnius

Handwritten text in the right column, starting with a large initial letter.

Handwritten text in a cursive script, likely a title or introductory passage. The text is written in dark ink on aged paper.

Main body of handwritten text on the left page, consisting of several lines of cursive script. Some characters are highlighted in red ink.

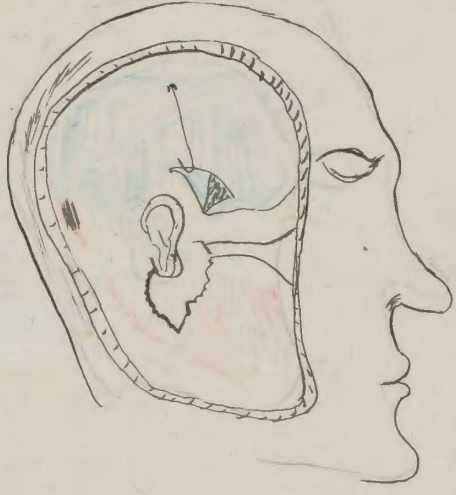
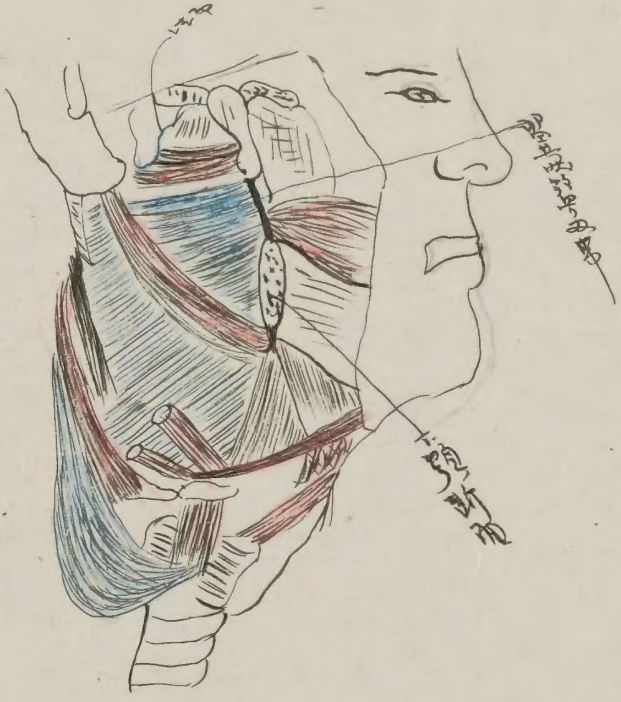
Handwritten section header

Main body of handwritten text on the right page, continuing the cursive script. Some characters are highlighted in red ink.

Handwritten text at the bottom of the right page, possibly a signature or a concluding note.

Handwritten text in a different script, possibly a title or a specific reference.

Handwritten text at the bottom right of the page.



۱۰
 ۱۱
 ۱۲
 ۱۳
 ۱۴
 ۱۵
 ۱۶
 ۱۷
 ۱۸
 ۱۹
 ۲۰
 ۲۱
 ۲۲
 ۲۳
 ۲۴
 ۲۵
 ۲۶
 ۲۷
 ۲۸
 ۲۹
 ۳۰
 ۳۱
 ۳۲
 ۳۳
 ۳۴
 ۳۵
 ۳۶
 ۳۷
 ۳۸
 ۳۹
 ۴۰
 ۴۱
 ۴۲
 ۴۳
 ۴۴
 ۴۵
 ۴۶
 ۴۷
 ۴۸
 ۴۹
 ۵۰
 ۵۱
 ۵۲
 ۵۳
 ۵۴
 ۵۵
 ۵۶
 ۵۷
 ۵۸
 ۵۹
 ۶۰
 ۶۱
 ۶۲
 ۶۳
 ۶۴
 ۶۵
 ۶۶
 ۶۷
 ۶۸
 ۶۹
 ۷۰
 ۷۱
 ۷۲
 ۷۳
 ۷۴
 ۷۵
 ۷۶
 ۷۷
 ۷۸
 ۷۹
 ۸۰
 ۸۱
 ۸۲
 ۸۳
 ۸۴
 ۸۵
 ۸۶
 ۸۷
 ۸۸
 ۸۹
 ۹۰
 ۹۱
 ۹۲
 ۹۳
 ۹۴
 ۹۵
 ۹۶
 ۹۷
 ۹۸
 ۹۹
 ۱۰۰

۱۰
 ۱۱
 ۱۲
 ۱۳
 ۱۴
 ۱۵
 ۱۶
 ۱۷
 ۱۸
 ۱۹
 ۲۰
 ۲۱
 ۲۲
 ۲۳
 ۲۴
 ۲۵
 ۲۶
 ۲۷
 ۲۸
 ۲۹
 ۳۰
 ۳۱
 ۳۲
 ۳۳
 ۳۴
 ۳۵
 ۳۶
 ۳۷
 ۳۸
 ۳۹
 ۴۰
 ۴۱
 ۴۲
 ۴۳
 ۴۴
 ۴۵
 ۴۶
 ۴۷
 ۴۸
 ۴۹
 ۵۰
 ۵۱
 ۵۲
 ۵۳
 ۵۴
 ۵۵
 ۵۶
 ۵۷
 ۵۸
 ۵۹
 ۶۰
 ۶۱
 ۶۲
 ۶۳
 ۶۴
 ۶۵
 ۶۶
 ۶۷
 ۶۸
 ۶۹
 ۷۰
 ۷۱
 ۷۲
 ۷۳
 ۷۴
 ۷۵
 ۷۶
 ۷۷
 ۷۸
 ۷۹
 ۸۰
 ۸۱
 ۸۲
 ۸۳
 ۸۴
 ۸۵
 ۸۶
 ۸۷
 ۸۸
 ۸۹
 ۹۰
 ۹۱
 ۹۲
 ۹۳
 ۹۴
 ۹۵
 ۹۶
 ۹۷
 ۹۸
 ۹۹
 ۱۰۰

۱۰
 ۱۱
 ۱۲
 ۱۳
 ۱۴
 ۱۵
 ۱۶
 ۱۷
 ۱۸
 ۱۹
 ۲۰
 ۲۱
 ۲۲
 ۲۳
 ۲۴
 ۲۵
 ۲۶
 ۲۷
 ۲۸
 ۲۹
 ۳۰
 ۳۱
 ۳۲
 ۳۳
 ۳۴
 ۳۵
 ۳۶
 ۳۷
 ۳۸
 ۳۹
 ۴۰
 ۴۱
 ۴۲
 ۴۳
 ۴۴
 ۴۵
 ۴۶
 ۴۷
 ۴۸
 ۴۹
 ۵۰
 ۵۱
 ۵۲
 ۵۳
 ۵۴
 ۵۵
 ۵۶
 ۵۷
 ۵۸
 ۵۹
 ۶۰
 ۶۱
 ۶۲
 ۶۳
 ۶۴
 ۶۵
 ۶۶
 ۶۷
 ۶۸
 ۶۹
 ۷۰
 ۷۱
 ۷۲
 ۷۳
 ۷۴
 ۷۵
 ۷۶
 ۷۷
 ۷۸
 ۷۹
 ۸۰
 ۸۱
 ۸۲
 ۸۳
 ۸۴
 ۸۵
 ۸۶
 ۸۷
 ۸۸
 ۸۹
 ۹۰
 ۹۱
 ۹۲
 ۹۳
 ۹۴
 ۹۵
 ۹۶
 ۹۷
 ۹۸
 ۹۹
 ۱۰۰

呼吸器 呼吸器 呼吸器 呼吸器
呼吸器 呼吸器 呼吸器 呼吸器
呼吸器 呼吸器 呼吸器 呼吸器

呼吸器 呼吸器 呼吸器 呼吸器

呼吸器 呼吸器 呼吸器 呼吸器
呼吸器 呼吸器 呼吸器 呼吸器
呼吸器 呼吸器 呼吸器 呼吸器

(一)

呼吸器 呼吸器 呼吸器 呼吸器
呼吸器 呼吸器 呼吸器 呼吸器
呼吸器 呼吸器 呼吸器 呼吸器

呼吸器 呼吸器 呼吸器 呼吸器
呼吸器 呼吸器 呼吸器 呼吸器
呼吸器 呼吸器 呼吸器 呼吸器

呼吸器 呼吸器 呼吸器 呼吸器
呼吸器 呼吸器 呼吸器 呼吸器
呼吸器 呼吸器 呼吸器 呼吸器

背筋 Caput longum (背筋) mylohyo-mandibularis

此筋起於下頰骨之牙槽突，沿頰骨內面而行，至下頰骨之體部，與頰骨筋相連。此筋之功用，在於閉合下頰骨，及咀嚼食物。

背筋 Caput longum mylohyo-mandibularis 此筋起於下頰骨之牙槽突，沿頰骨內面而行，至下頰骨之體部，與頰骨筋相連。此筋之功用，在於閉合下頰骨，及咀嚼食物。

背筋 Caput longum mylohyo-mandibularis 此筋起於下頰骨之牙槽突，沿頰骨內面而行，至下頰骨之體部，與頰骨筋相連。此筋之功用，在於閉合下頰骨，及咀嚼食物。

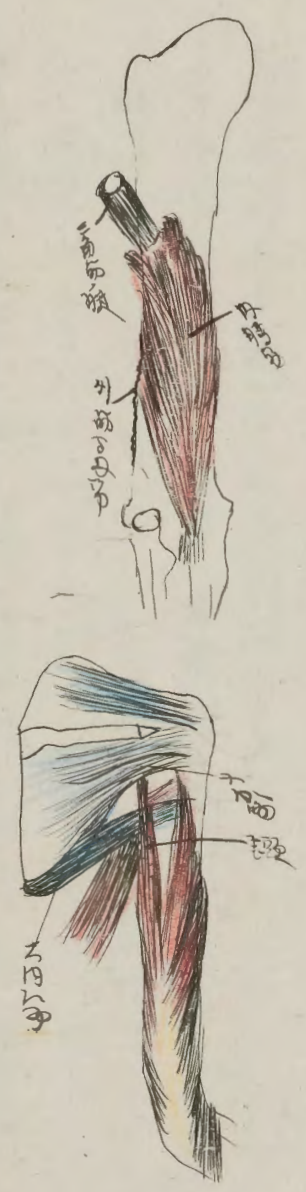
背筋 Caput longum mylohyo-mandibularis 此筋起於下頰骨之牙槽突，沿頰骨內面而行，至下頰骨之體部，與頰骨筋相連。此筋之功用，在於閉合下頰骨，及咀嚼食物。

背筋 m. Coraco-brachialis

此筋起於肩胛骨之喙突，沿腋窩內面而行，至大臂骨之小結節。此筋之功用，在於屈曲大臂，及內收大臂。

背筋 m. brachialis internus

此筋起於大臂骨之小結節，沿大臂骨內面而行，至肘骨之滑車。此筋之功用，在於屈曲肘部。



此筋起於大臂骨之小結節，沿大臂骨內面而行，至肘骨之滑車。此筋之功用，在於屈曲肘部。

此筋起於大臂骨之小結節，沿大臂骨內面而行，至肘骨之滑車。此筋之功用，在於屈曲肘部。

Handwritten text in the top left corner of the left page.

Main body of handwritten text in the top section of the left page.

Handwritten text in the middle section of the left page.

Handwritten text in the bottom section of the left page.

Handwritten text in the bottom right corner of the left page.

Handwritten header or title in the top center of the right page.

Handwritten text in the top section of the right page.

Handwritten text in the middle section of the right page.

Handwritten text in the bottom section of the right page.

Handwritten text in the bottom right corner of the right page.

此乃... 肌肉... 纤维... 组织... 结构... 解剖... 生理... 病理... 临床... 应用... 研究... 进展... 展望... 总结... 参考文献... 附录... 索引... 致谢... 出版说明... 版权... 印刷... 装订... 规格... 重量... 价格... 发行... 日期... 地点... 单位... 姓名... 职称... 学位... 学历... 经历... 成就... 贡献... 影响... 评价... 地位... 作用... 意义... 价值... 地位... 作用... 意义... 价值...

深會
 肌纤维指金(男)

1871-1872



此乃... 肌肉... 纤维... 组织... 结构... 解剖... 生理... 病理... 临床... 应用... 研究... 进展... 展望... 总结... 参考文献... 附录... 索引... 致谢... 出版说明... 版权... 印刷... 装订... 规格... 重量... 价格... 发行... 日期... 地点... 单位... 姓名... 职称... 学位... 学历... 经历... 成就... 贡献... 影响... 评价... 地位... 作用... 意义... 价值...

此乃... 肌肉... 纤维... 组织... 结构... 解剖... 生理... 病理... 临床... 应用... 研究... 进展... 展望... 总结... 参考文献... 附录... 索引... 致谢... 出版说明... 版权... 印刷... 装订... 规格... 重量... 价格... 发行... 日期... 地点... 单位... 姓名... 职称... 学位... 学历... 经历... 成就... 贡献... 影响... 评价... 地位... 作用... 意义... 价值...

Handwritten text in a cursive script, likely a signature or name, possibly starting with 'A. ...'.

Handwritten word or short phrase.

Handwritten text, possibly a date or a specific reference.

Handwritten text, possibly a signature or name.

Handwritten text, possibly a signature or name.

Main body of handwritten text on the right page, consisting of several lines of cursive script.

Handwritten text in a cursive script, likely a list or a series of entries. The text is dense and fills the left side of the page.

Handwritten text in a cursive script, continuing the list or entries from the previous block.

Handwritten text in a cursive script, continuing the list or entries.

M. kadonia madidias

Handwritten text in a cursive script, possibly a description or notes related to the species above.

M. kadonia

Handwritten text in a cursive script, possibly a description or notes related to the species above.

M. kadonia

Handwritten text in a cursive script, possibly a description or notes related to the species above.

Handwritten text in a cursive script, possibly a description or notes related to the species above.

Handwritten text in a cursive script, possibly a description or notes related to the species above.

M. kadonia

Handwritten text in a cursive script, possibly a description or notes related to the species above.

M. kadonia

Handwritten text in a cursive script, possibly a description or notes related to the species above.

Handwritten text in a cursive script, likely a header or title.

Handwritten text in a cursive script, likely a header or title.

Main body of handwritten text in a cursive script, starting with a large initial letter.

Handwritten text in a cursive script, possibly a section marker.

Main body of handwritten text in a cursive script.

Handwritten text in a cursive script, possibly a section marker.

Main body of handwritten text in a cursive script.

Main body of handwritten text in a cursive script.

Handwritten text in a cursive script, possibly a section marker.

Handwritten text in a cursive script, possibly a section marker.

Main body of handwritten text in a cursive script.

Main body of handwritten text in a cursive script.

Handwritten text in a cursive script, possibly a section marker.

Handwritten text in a cursive script, possibly a section marker.

Main body of handwritten text in a cursive script, containing several lines of text.

Handwritten text in a cursive script, possibly a section marker.

Main body of handwritten text in a cursive script.

Handwritten text in a cursive script, possibly a section marker.

Handwritten text in a cursive script, possibly a section marker.

Handwritten text in a cursive script, likely a letter or document, starting with a large initial letter.

Handwritten text in a cursive script, continuing the previous block.

Handwritten text in a cursive script, continuing the previous block.

Handwritten text in a cursive script, continuing the previous block.

Handwritten text in a cursive script, continuing the previous block.

Handwritten text in a cursive script, continuing the previous block.

Handwritten text in a cursive script, continuing the previous block.

Handwritten text in a cursive script, continuing the previous block.

Handwritten text in a cursive script, likely a list or entry.

Handwritten text in a cursive script, likely a list or entry.

Handwritten text in a cursive script, likely a list or entry.

Handwritten text in a cursive script, likely a list or entry.

Handwritten text in a cursive script, likely a list or entry.

Handwritten text in a cursive script, likely a list or entry.

Handwritten text in a cursive script, likely a list or entry.

Handwritten text in a cursive script, likely a list or entry.

Handwritten text in a cursive script, likely a list or entry.

Handwritten text in a cursive script, likely a list or notes, located on the left side of the page.

Handwritten text in a cursive script, continuing the list or notes, located in the middle section of the page.

Handwritten text in a cursive script, including several lines of text and a small diagram or sketch, located on the right side of the page.

Handwritten text in a cursive script, located at the bottom of the page, possibly a concluding note or signature.

Handwritten text in a cursive script, likely a list or a series of entries.

Handwritten word or phrase, possibly a title or a specific entry.

Handwritten text, possibly a date or a reference.

Handwritten text, possibly a name or a location.

Handwritten text, possibly a name or a location.

Handwritten text, possibly a name or a location.

Handwritten text, possibly a name or a location.

Handwritten text, possibly a name or a location.

Handwritten text, possibly a name or a location.

Handwritten text, possibly a name or a location.

Handwritten text, possibly a name or a location.

Handwritten text, possibly a name or a location.

Handwritten text, possibly a name or a location.

Handwritten text, possibly a name or a location.

Handwritten text, possibly a name or a location.

Handwritten text in a cursive script, likely a list or a series of entries.

Handwritten text in a cursive script, likely a list or a series of entries.

Handwritten text in a cursive script, likely a list or a series of entries.

Handwritten text in a cursive script, likely a list or a series of entries.

Handwritten text in a cursive script, likely a list or a series of entries.

Handwritten text in a cursive script, likely a list or a series of entries.

Handwritten text in a cursive script, likely a list or a series of entries.

Handwritten text, possibly a name or a location.

Handwritten text, possibly a name or a location.

Handwritten text, possibly a name or a location.

Handwritten text, possibly a name or a location.

Handwritten text, possibly a name or a location.

Handwritten text, possibly a name or a location.

Handwritten text, possibly a name or a location.

Handwritten text, possibly a name or a location.

Handwritten text, possibly a name or a location.

Handwritten text in Arabic script, likely a list or index of items.

Handwritten title or section header in Arabic script.

Handwritten text in Arabic script, possibly a list of names or titles.

Handwritten text in Arabic script, possibly a list of names or titles.

Handwritten text in Arabic script, possibly a list of names or titles.

Handwritten text in Arabic script, possibly a list of names or titles.

Handwritten title or section header in Arabic script.

Handwritten text in Arabic script, possibly a list of names or titles.

Handwritten text in Arabic script, possibly a list of names or titles.

Handwritten text in Arabic script, possibly a list of names or titles.

Handwritten text in Arabic script, possibly a list of names or titles.

Handwritten text in a cursive script, likely a list or a series of entries. The text is written in a dark ink on aged paper.

Handwritten text in a cursive script, continuing the list or series of entries. The text is written in a dark ink on aged paper.

Handwritten text in a cursive script, continuing the list or series of entries. The text is written in a dark ink on aged paper.

Handwritten text in a cursive script, continuing the list or series of entries. The text is written in a dark ink on aged paper.

Handwritten text in a cursive script, continuing the list or series of entries. The text is written in a dark ink on aged paper.

Handwritten text in a cursive script, likely a list or a series of entries. The text is written in a dark ink on aged paper.

Handwritten text in a cursive script, likely a list or index, starting with a large initial letter.

Second block of handwritten text, continuing the list or index with various entries.

A short handwritten phrase or section marker.

A small handwritten note or signature.

Third block of handwritten text, possibly a summary or a specific entry.

Large block of handwritten text on the right page, consisting of several lines of cursive script.

Final block of handwritten text at the bottom of the right page.

Handwritten text at the top of the left page.

Handwritten text below the top line on the left page.

Main body of handwritten text on the left page, starting with a large initial character.

Handwritten text below the main body on the left page.

Second main body of handwritten text on the left page, continuing the script.

Small handwritten text or signature at the bottom of the left page.

Main body of handwritten text on the right page, starting with a large initial character.

Small handwritten text or signature at the bottom of the right page.

Final section of handwritten text on the right page, including a large initial character.

Handwritten text in a cursive script, likely a title or introductory line.

Handwritten title or section header in a cursive script.

Main body of handwritten text on the left page, consisting of several lines of cursive script.

Main body of handwritten text on the right page, consisting of several lines of cursive script.

Handwritten text in a cursive script, likely a medical or scientific treatise. The text is written in a dark ink on aged paper. It begins with a large initial letter, possibly 'P' or 'P'.

Handwritten text in a cursive script, continuing the text from the previous page. It begins with a large initial letter, possibly 'P' or 'P'.

Section header or title in the cursive script, possibly indicating a new chapter or section.

Handwritten text in a cursive script, continuing the text from the previous page. It begins with a large initial letter, possibly 'P' or 'P'.

Section header or title in the cursive script, possibly indicating a new chapter or section.

Handwritten text in a cursive script, continuing the text from the previous page. It begins with a large initial letter, possibly 'P' or 'P'.

Small handwritten text or notes at the bottom of the page, possibly a signature or date.

Handwritten text in Arabic script, likely a list or record of names and titles.

Handwritten text, possibly a name or title.

Handwritten text, possibly a name or title.

Handwritten text in Arabic script, likely a list or record of names and titles.

Handwritten text, possibly a name or title.

Handwritten text in Arabic script, likely a list or record of names and titles.

Handwritten text, possibly a name or title.

Handwritten text in Arabic script, likely a list or record of names and titles.

Handwritten text in Arabic script, likely a list or record of names and titles.

Handwritten text, possibly a name or title.

Handwritten text, possibly a name or title.

Handwritten text in Arabic script, likely a list or record of names and titles.

Handwritten text, possibly a name or title.

Handwritten text, possibly a name or title.

Handwritten text in a cursive script, likely a religious or philosophical treatise. The text is arranged in approximately 10 lines across the page.

(313)

Handwritten text, possibly a title or a specific section header, located below the first paragraph.

Second paragraph of handwritten text in the same cursive script, continuing the discourse from the first page.

Handwritten text at the bottom of the second page, including a signature or a concluding statement.

Handwritten text in a cursive script, likely a list or account. The text is written vertically on the page.

Handwritten text in a cursive script, likely a list or account. The text is written vertically on the page.

Handwritten text in a cursive script, likely a list or account. The text is written vertically on the page.

Handwritten text in a cursive script, likely a list or account. The text is written vertically on the page.

Handwritten text in a cursive script, likely a list or account. The text is written vertically on the page.

Handwritten text in a cursive script, likely a list or a series of entries. The text is written in a dark ink on aged paper.

Handwritten title or section header, possibly indicating a specific category or date.

Handwritten text in a cursive script, continuing the list or entries from the previous page.

Handwritten text in a cursive script, possibly a concluding note or a signature.

Handwritten text in a cursive script, likely a list or a series of entries.

Handwritten title or section header, possibly indicating a specific category or date.

Handwritten text in a cursive script, continuing the list or entries.

Handwritten text in a cursive script, possibly a concluding note or a signature.

Handwritten text in a cursive script, likely a list or a series of entries.

Handwritten text in a cursive script, likely a religious or philosophical treatise. The text is written in a dark ink on aged paper.

Handwritten title or section header in the same cursive script.

Continuation of the handwritten text, consisting of several lines of cursive script.

Handwritten title or section header, possibly indicating a new part or chapter.

Final lines of handwritten text on the left page, ending with a large, stylized character.

Handwritten title or section header at the top of the right page.

Handwritten text in a cursive script, continuing the treatise from the left page. The text is dense and fills most of the page.

Final lines of handwritten text on the right page, concluding the section or treatise.

Handwritten text in Arabic script, likely a list or index of names and titles.

Handwritten text in Arabic script, continuing the list or index.

Handwritten text in Arabic script, continuing the list or index.

Handwritten text in Arabic script, likely a list or index of names and titles.

Handwritten text in Arabic script, continuing the list or index.

Handwritten text in Arabic script, continuing the list or index.

Handwritten text in Arabic script, continuing the list or index.

新發在野書

Handwritten text in vertical columns, likely the beginning of a letter or document.

Handwritten text in vertical columns, continuing the document.

Handwritten text in vertical columns, possibly a signature or address.

Handwritten text in vertical columns, continuing the document.

Handwritten text in vertical columns, possibly a signature or address.

Handwritten text in vertical columns, continuing the document.

B 尺 第 18 号 *Wundschia panchina* *Robin*

短叶海狗油
短叶海狗油
短叶海狗油
短叶海狗油
短叶海狗油

短叶海狗油
短叶海狗油
短叶海狗油
短叶海狗油
短叶海狗油

短叶海狗油
短叶海狗油
短叶海狗油
短叶海狗油
短叶海狗油

短叶海狗油
短叶海狗油
短叶海狗油
短叶海狗油
短叶海狗油

短叶海狗油
短叶海狗油
短叶海狗油
短叶海狗油
短叶海狗油

短叶海狗油
短叶海狗油
短叶海狗油
短叶海狗油
短叶海狗油

Handwritten text at the top of the page.

Handwritten text line.

Handwritten text line.

Handwritten text line.

Handwritten text line.

Handwritten text line.

Handwritten text line.

Handwritten text line.

Handwritten text line.

Handwritten text line.

Main body of handwritten text on the left page.

Handwritten text line.

Handwritten text line.

Handwritten text line.

Handwritten text line.

Handwritten text line.

Main body of handwritten text on the right page.

Handwritten text line.

Handwritten text line.

Handwritten text line.

Handwritten text line.

Handwritten text line.

Handwritten text line.

Handwritten text line.

Handwritten text line.

Handwritten text line.

Handwritten text in a cursive script, likely a list or account entry.

Handwritten text, possibly a signature or a specific entry.

Handwritten text in a cursive script, continuing the list or account.

Handwritten text, possibly a signature or a specific entry.

Handwritten text, possibly a signature or a specific entry.

Handwritten title or section header.

Handwritten text in a cursive script, likely a list or account entry.

Handwritten text, possibly a signature or a specific entry.

Handwritten text in a cursive script, likely a list or account entry.

Handwritten text in a cursive script, likely a list or account entry.

Handwritten text, possibly a signature or a specific entry.

Handwritten text in a cursive script, likely a list or account entry.

Handwritten text in a cursive script, likely a list or account entry.

Handwritten text, possibly a signature or a specific entry.

Handwritten text in a cursive script, likely a list or account entry.

Handwritten text in a cursive script, likely a list or entries, starting with a vertical line on the left.

Handwritten text, possibly a section header or a specific entry, located below the first block.

Handwritten text, possibly a section header or a specific entry, located below the second block.

Handwritten text in a cursive script, continuing the list or entries, with several lines of text.

Handwritten text, possibly a section header or a specific entry, located below the third block.

Handwritten text in a cursive script, continuing the list or entries, with several lines of text.

Handwritten text, possibly a section header or a specific entry, located below the fourth block.

Handwritten text, possibly a section header or a specific entry, located below the fifth block.

1. The Hebrew expression for natural Evidentiality

על פי הדיבור ה' אלקינו

על פי הדיבור: The Hebrew expression for natural Evidentiality is: *על פי הדיבור* (Al pi ha-dibur). This expression is used in the Bible to indicate that something is evident or self-evident. For example, in *Deuteronomy 1:11*, it says: *על פי הדיבור ה' אלקינו* (Al pi ha-dibur YHWH Eloheinu). This expression is also used in *Deuteronomy 17:15*, *Deuteronomy 29:19*, and *Deuteronomy 32:1*.

על פי הדיבור ה' אלקינו

על פי הדיבור: The Hebrew expression for natural Evidentiality is: *על פי הדיבור* (Al pi ha-dibur). This expression is used in the Bible to indicate that something is evident or self-evident. For example, in *Deuteronomy 1:11*, it says: *על פי הדיבור ה' אלקינו* (Al pi ha-dibur YHWH Eloheinu). This expression is also used in *Deuteronomy 17:15*, *Deuteronomy 29:19*, and *Deuteronomy 32:1*.

על פי הדיבור ה' אלקינו
על פי הדיבור

על פי הדיבור ה' אלקינו

על פי הדיבור ה' אלקינו

על פי הדיבור: The Hebrew expression for natural Evidentiality is: *על פי הדיבור* (Al pi ha-dibur). This expression is used in the Bible to indicate that something is evident or self-evident. For example, in *Deuteronomy 1:11*, it says: *על פי הדיבור ה' אלקינו* (Al pi ha-dibur YHWH Eloheinu). This expression is also used in *Deuteronomy 17:15*, *Deuteronomy 29:19*, and *Deuteronomy 32:1*.

Handwritten text in a cursive script, likely a title or header, starting with a large initial letter.

Main body of handwritten text in a cursive script, consisting of several lines of dense writing.

Main body of handwritten text in a cursive script on the reverse side, consisting of several lines of dense writing.

Handwritten text at the top of the left page.

Handwritten text below the top line on the left page.

Handwritten title or section header on the left page.

Handwritten text below the title on the left page.

Main body of handwritten text on the left page, consisting of several lines of cursive script.

Handwritten text below the main body on the left page.

Handwritten text below the previous line on the left page.

Handwritten text at the bottom of the left page.

Main body of handwritten text on the right page, consisting of several lines of cursive script.

Handwritten text below the main body on the right page.

Handwritten text below the previous line on the right page.

Handwritten title or section header on the right page.

Handwritten text below the title on the right page.

Main body of handwritten text on the right page, consisting of several lines of cursive script.

該處之押印隨之傳不
得命之押印隨之傳不
得命之押印隨之傳不

三 用 鐵 釘 鑲

此用之鐵釘之鑲法種之鐵釘之入中其中心之鐵釘下而由之
帶之大者帶之鐵釘之鑲法種之鐵釘之入中其中心之鐵釘下而由之
之鐵釘之鑲法種之鐵釘之入中其中心之鐵釘下而由之
在鐵釘之鑲法種之鐵釘之入中其中心之鐵釘下而由之
所於之鐵釘之鑲法種之鐵釘之入中其中心之鐵釘下而由之
此中其中心之鐵釘之鑲法種之鐵釘之入中其中心之鐵釘下而由之
之鐵釘之鑲法種之鐵釘之入中其中心之鐵釘下而由之
且其中心之鐵釘之鑲法種之鐵釘之入中其中心之鐵釘下而由之

